

CORDLINE™

— 2-WAY CORD CHANNEL

ENGLISH

• WARNING:

(1) Please do not overload the compartments. (2) Turn off power and unplug all power wires prior to installation. (3) This product is not to be used for hard-wired electrical wiring. (4) For use in dry and indoor locations only.

• INSTALLATION INSTRUCTION

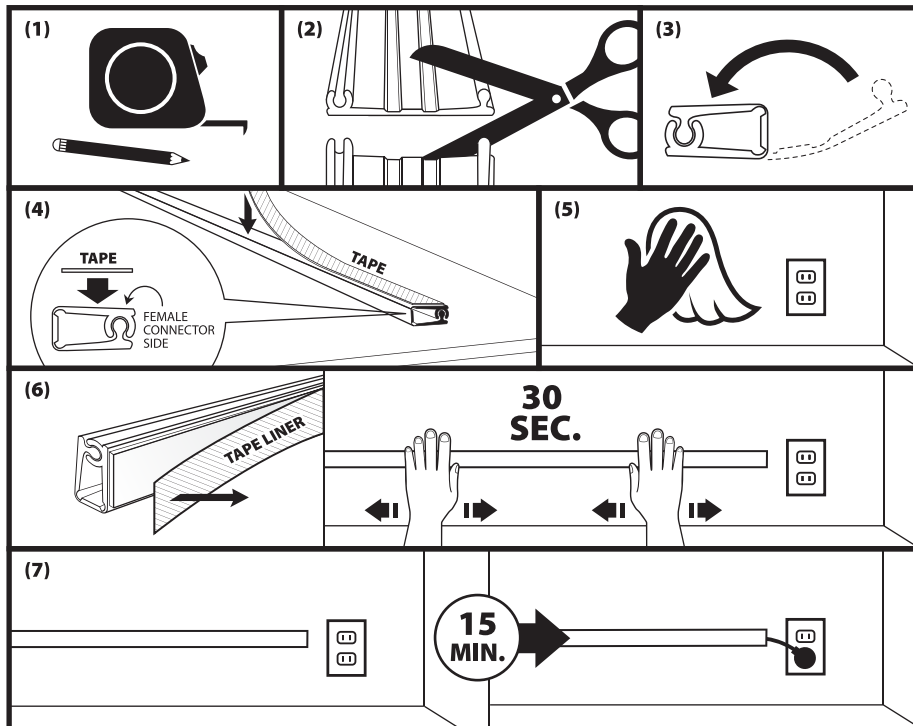
Determine your installation method based on the volume of cords you wish to insert. Maximum quantity of cords to fit in each method may vary depending on your cord size. Please select the best method to suit your need:

METHOD 1 Small-capacity Cordline

METHOD 2 Large-capacity Cordline

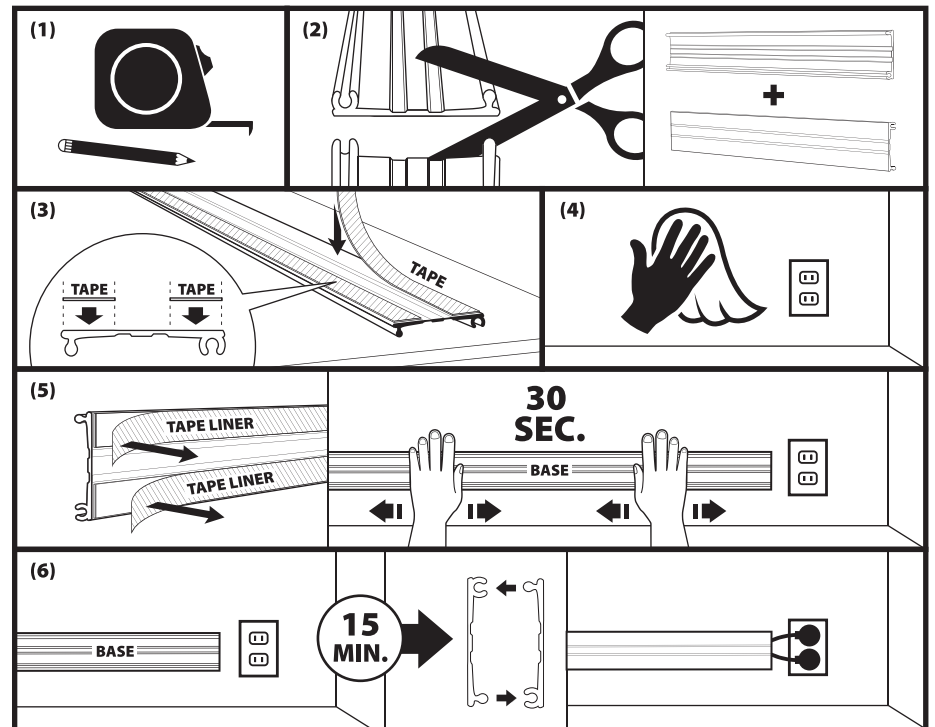
METHOD 1 For small-capacity Cordline installation (Installing up to 8 ft long)

(1) Measure and plan the route. (2) Lay Cordline open flat and cut it to desire length. (3) Fold Cordline along the crease to form a small-capacity cord channel. (4) Place Cordline on a table and apply tape firmly on the **female connector side** of Cordline. (5) Wipe clean and dry area of wall before affixing Cordline to the wall. (6) Peel off the tape liner and press Cordline firmly against the wall repeatedly for 30 seconds to ensure maximum bonding. (7) Wait 15 minutes before inserting cords for best result.



METHOD 2 For large-capacity Cordline installation (Installing up to 4 ft long)

(1) Measure and plan the route. (2) Lay Cordline open flat and cut it to desire length. **Two identical length of Cordline are required for method 2:** one strip as the base and one strip as the cover. For one box of Cordline, it can be cut into 2 strips up to 4 feet each. Additional box of Cordline can be purchased for longer need. (i.e. Two boxes of Cordline can create one continuous 8-foot length in this method.) (3) Place one strip of Cordline flat on a table with back side facing up. Apply tape as indicated. You will only need to apply tape to one strip of Cordline, which will now serve as the base to affix to the wall. (4) Wipe clean and dry area of wall before affixing the base (the Cordline with tape) to the wall. (5) Peel off the tape liner and press the base firmly against the wall repeatedly for 30 seconds to ensure maximum bonding. (6) For best result, wait 15 minutes before inserting cords and applying the cover (the Cordline without tape) to the base. The cover and the base will join together when you press the female and male connector together.



• OPTIONAL FEATURE

When you have outgrown the small-capacity Cordline and wish to add more cords, you can convert Cordline from method 1 to method 2. (Additional purchase of Cordline may be necessary.)

Please visit our website www.ut-wire.com or contact our customer service if you have any question or require additional assistance in installation.